

# Public Private Partnerships



Florida's Turnpike Experience

---

---

---

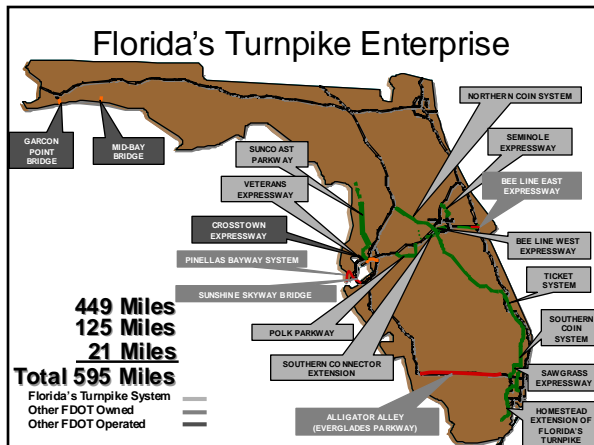
---

---

---

---

---




---

---

---

---

---

---

---

---

## Partnerships - Operations

**Model 1**  
 100% In-house

**Model 2**  
 100% Privatized

FTE Model	
10% In-house	494
90% Privatized	4,133
	<u>4,627</u>

- Maximize efficiency
- Maintain accountability

---

---

---

---

---

---

---

---




---

---

---

---

---

---

---

---

	<b>Food Service</b>
 Martin Petroleum Corp.	<b>Fuel Stations</b>
	<b>Toll Collectors</b>
	<b>Backroom</b>

---

---

---

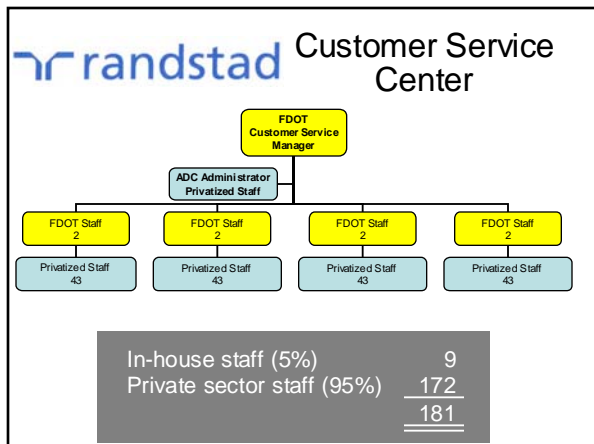
---

---

---

---

---




---

---

---

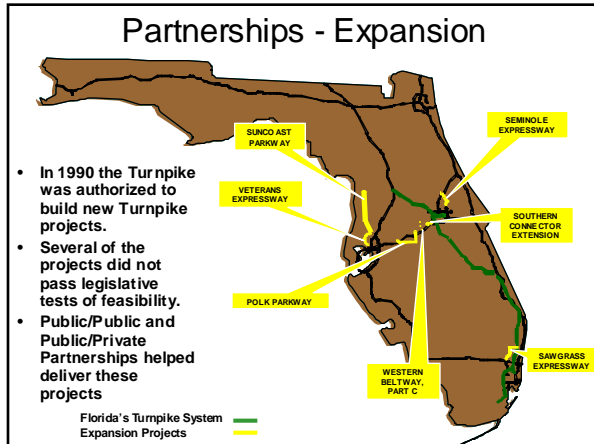
---

---

---

---

---




---

---

---

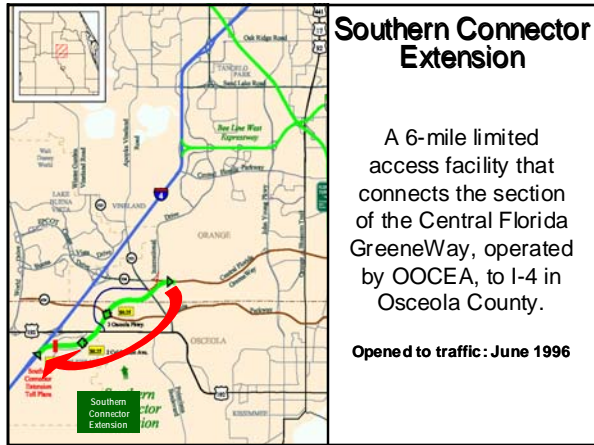
---

---

---

---

---




---

---

---

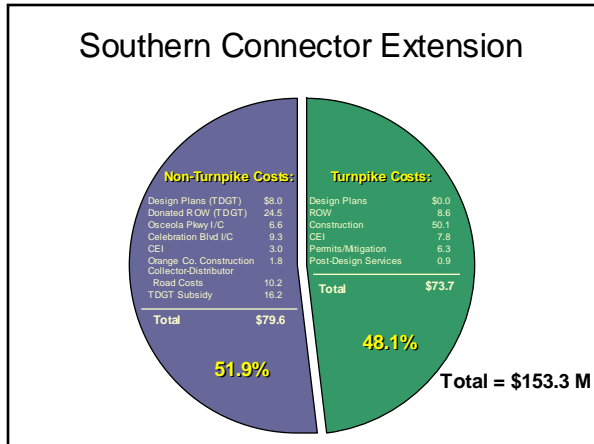
---

---

---

---

---




---

---

---

---

---

---

---

---



### Seminole Expressway, Project 2

A 6-mile limited access facility from the northern terminus of Seminole Expressway, Project 1 to I-4.

Opened to traffic: September 2002

---

---

---

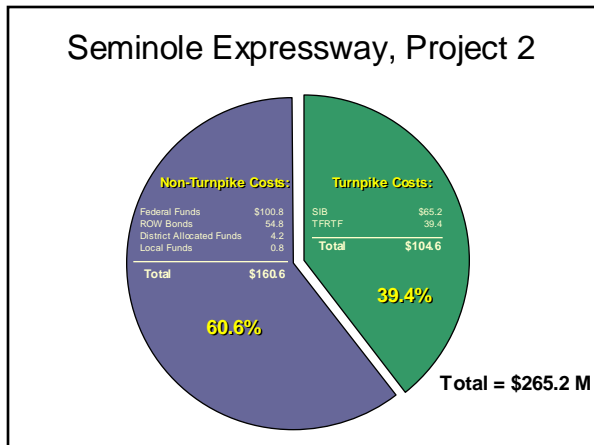
---

---

---

---

---




---

---

---

---

---

---

---

---



### Western Beltway, Part C

A planned four-lane, limited access toll facility that provides an alternate north-south route between Florida's Turnpike west of Orlando and I-4 south of Walt Disney World.

Expected opening: December 2006

---

---

---

---

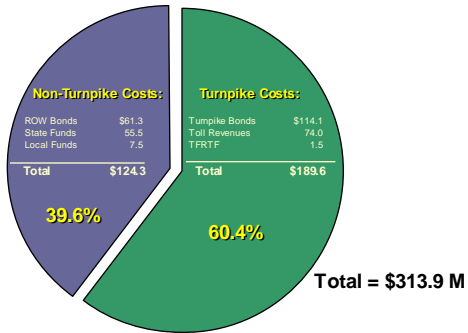
---

---

---

---

### Western Beltway, Part C




---

---

---

---

---

---

---

---

### Partnerships - Interchanges

- Existing ★
  - Pro Player Stadium (Joe Robbie)
  - Office Depot Center (Broward Arena)
  - NW 106<sup>th</sup> St.
  - NW 12<sup>th</sup> St. (Beacon Tradeport)
- Future ★
  - Becker Rd. (public/public/private)
  - CR 470 (public/public)
  - SR 417 (public/public)

---

---

---

---

---

---

---

---

### Florida Continues to Grow



Travel has increased *5 times faster* than transportation infrastructure has been built to meet that demand

---

---

---

---

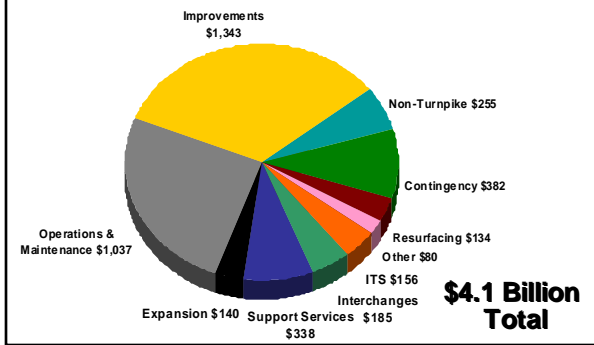
---

---

---

---

### Adopted Five-Year Work Program




---

---

---

---

---

---

---

---




---

---

---

---

---

---

---

---

### Future Partnership Opportunities

- F.S. 334.30 Public-Private Transportation Facilities
  - Updated to reflect public interest to accelerate needed transportation projects
  - Provides flexibility enabling Department to:
    - Accelerate projects in 5-Yr Work Program
    - Use State resources to participate in funding projects on the State Highway System
    - Apply eminent domain powers
    - Lend Toll Facility Revolving Trust Funds

• Potential Projects




---

---

---

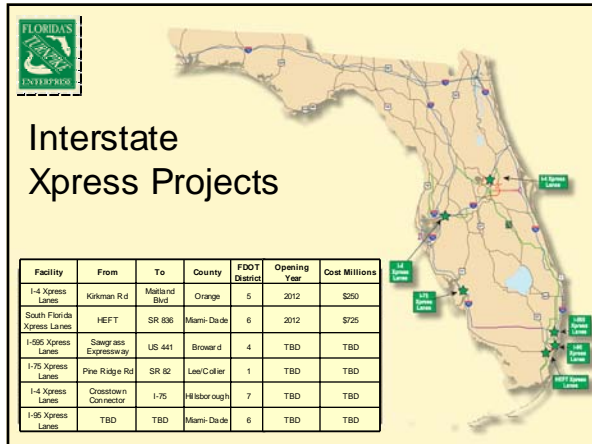
---

---

---

---

---




---

---

---

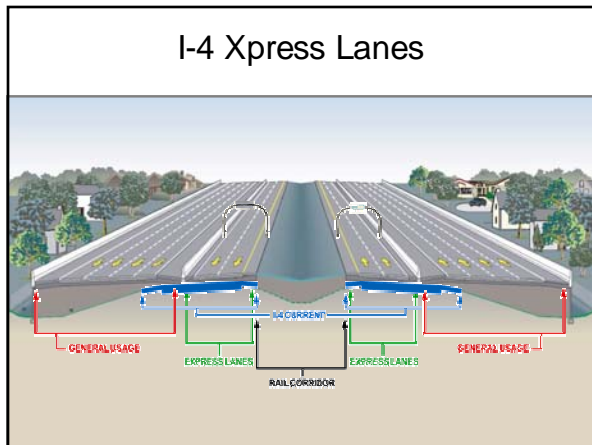
---

---

---

---

---




---

---

---

---

---

---

---

---

**Conclusion:**  
*Doing More with Toll Partnerships*

- Needs are great
- Toll facilities generate cash/revenue streams
- We must leverage *our* combined resources
- Public Private Partnerships can help Florida meet its Transportation

---

---

---

---

---

---

---

---