

CBP3 Sustainable Stormwater Infrastructure Summit




December 7, 2015 | Philadelphia, PA

Overview of Community-Based Public-Private Partnerships (CBP3s) Approach

CBP3 Sustainable Stormwater Infrastructure Summit
December 7, 2015
Philadelphia, PA

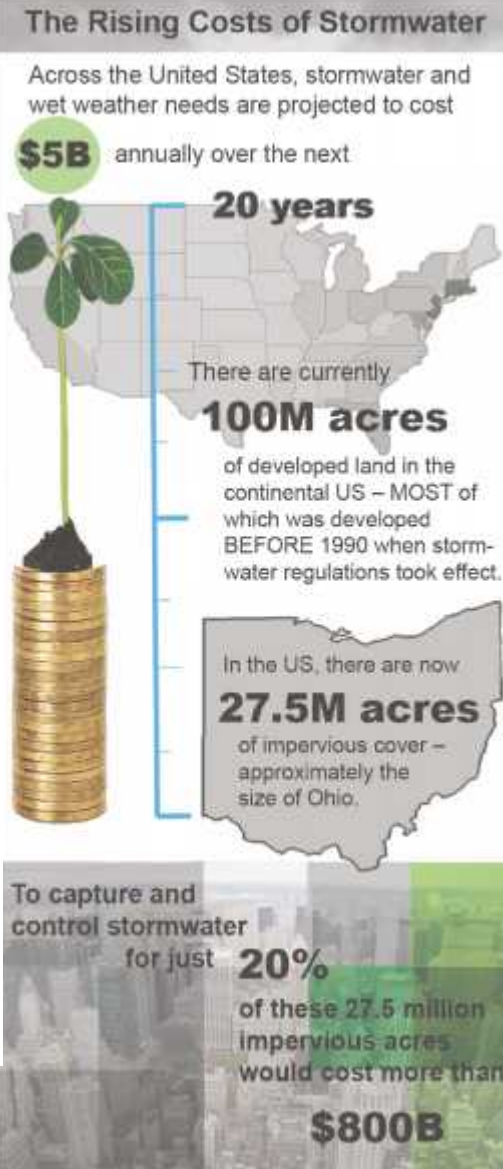




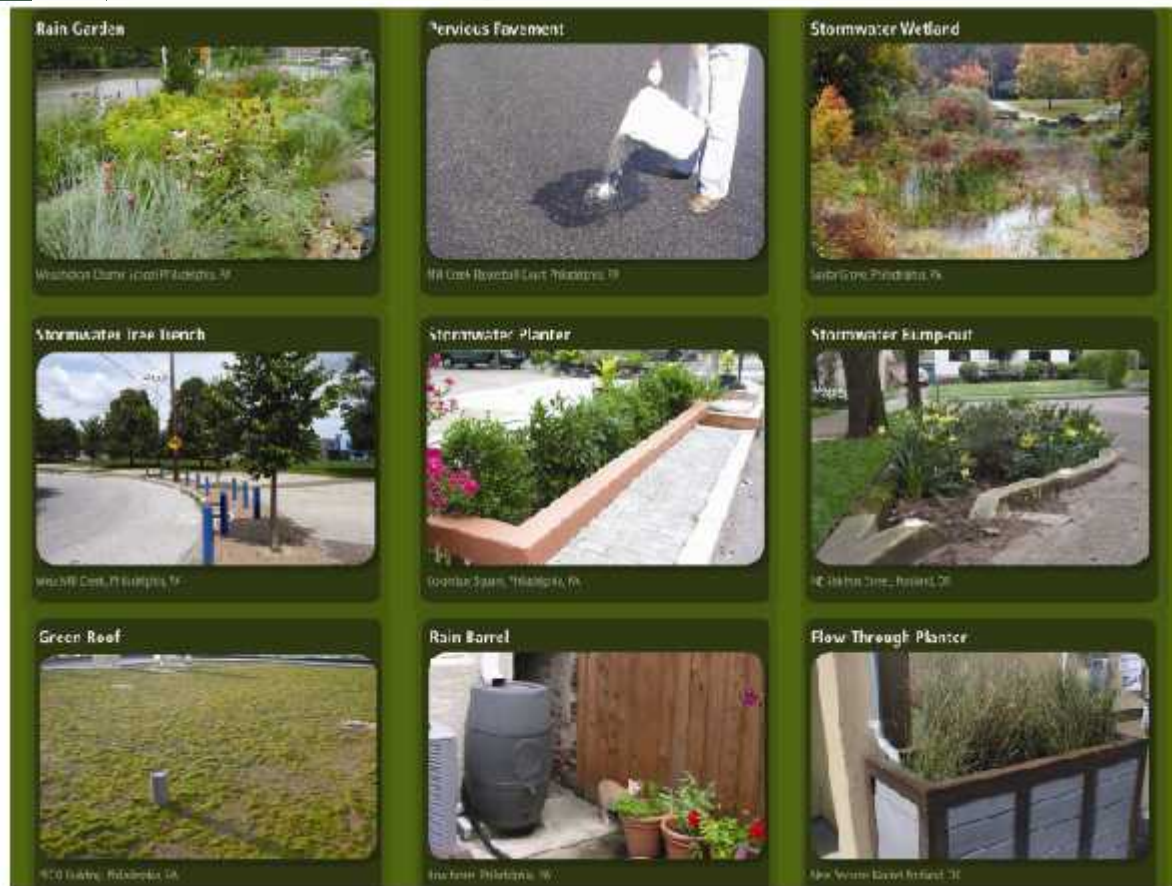
“Innovation is
change that
unlocks new
value”
– Jamie Notter

The Challenge of Stormwater

- ▶ Impervious cover impacts to our environment
- ▶ Currently 100 million acres of developed land in U.S.
 - ▶ Most of that occurred prior to stormwater regulations
- ▶ Currently 27.5 million acres of impervious cover in U.S. = about the size of Ohio
- ▶ Retrofit costs can range from \$50,000 to \$300,000 per impervious acres treated or more under status quo approach



Green Stormwater Infrastructure



- Downspout disconnection
- Rainwater harvesting
- Rain gardens (bioretention)
- High-flow bioretention
- Planter boxes
- Bioswales
- Permeable pavements
- Green roofs

Need for CBP3 | The CBP3 Advantage

The CBP3 approach can shorten timelines for green infrastructure implementation and can reduce costs by as much as

40%

compared to traditional green infrastructure delivery methods.

Conventional wisdom is

\$150K

per impervious acre retrofitted, but costs for CBP3 can be less than or equal to

\$80K

per impervious acre retrofitted.



ADDITIONAL CBP3 BENEFITS



Equitable work and jobs for communities & local businesses

Optimization of market-based tools, like credits and rebates



Want to learn more about the CBP3 approach?

- Status quo investments not getting us there
- CBP3 changes status quo
 - Harness private sector
 - Large-scale investments
 - Community benefits top priority
 - Maintenance is key
 - Highest-value, not cheapest solutions

AN AFFORDABLE SOLUTION
Community-based public-private partnerships (CBP3)

A contract between the public and private sectors arranging financing, delivery, and typically long-term operations and maintenance of integrated green stormwater infrastructure. CBP3s focus investments on green infrastructure approaches that create local economic growth and improve quality of life in urban and underserved communities.

The CBP3 approach can shorten timelines for green infrastructure implementation and can reduce costs by as much as

CBP3 Considerations for Public/Municipal Leaders



- **CBP3 is not privatization**
 - Leverages best of public/private
- **Public can – and should - define the goals of a CBP3 program**
 - Through RFQ process....
- **CBP3 augments staff/program**
- **CBP3 allocates risk appropriately**

CBP3 Guide Overview

➤ CBP3 Community Self-Help Guide

- Led by EPA Region 3
- Provides overview of P3 purpose, structure, aspects
- Gives history of P3s in the U.S.
- Compares traditional P3 vs. CBP3
- Review of policy and statutory environment for P3s
- Provides drivers for large-scale investment
- Lists various scenarios throughout Region 3
- http://www2.epa.gov/sites/production/files/2015-12/documents/gi_cb_p3_guide_epa_r3_final_042115_508.pdf



Questions?

Dominique Lueckenhoff
EPA Region 3 Water Protection Division
Deputy Director
lueckenhoff.dominique@epa.gov

Seth Brown
Storm & Stream Solutions, LLC
Founder, Principal
EPA Region 3 Contractor
seth.brown@stormandstream.com

CBP3 Sustainable Stormwater Infrastructure Summit



December 7, 2015 | Philadelphia, PA

Overview of Community-Based Public-Private Partnerships (CBP3s) Approach

CBP3 Sustainable Stormwater Infrastructure Summit
December 7, 2015
Philadelphia, PA

